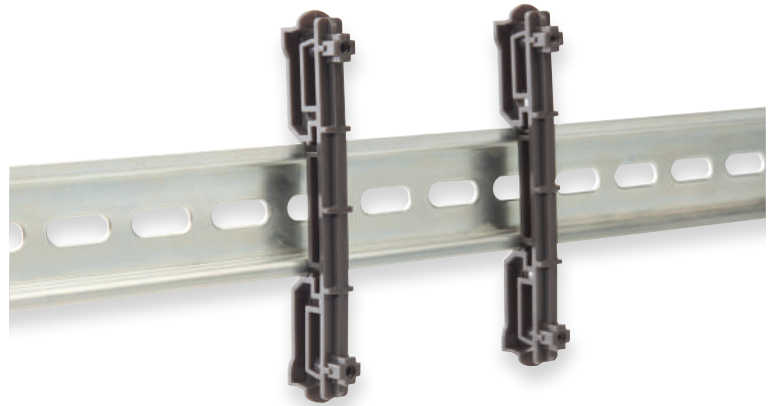


DIN Rail clips feature a universal design allowing many Inner Range circuit boards, including the T4000 Alarm Communicator and Inception Controller, to be mounted directly onto standard 35mm DIN rail.

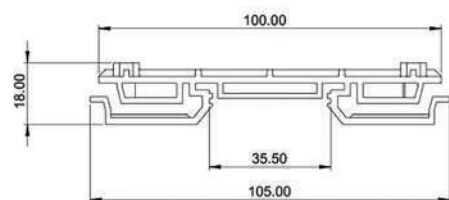
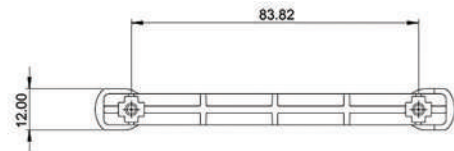
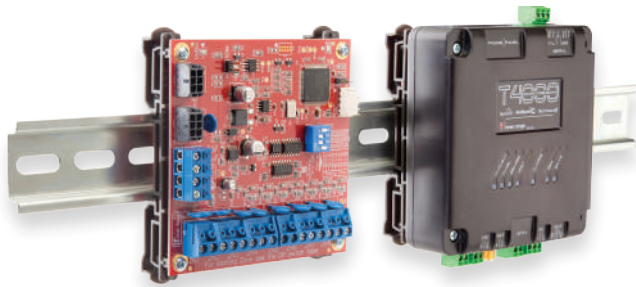
DIN Rail clips can be used to mount the following Inner Range products.

- T4000 Alarm Communicator
- Inception Controller
- Integriti Size "B" & "C" PCB'S including:
  - All Integriti UniBus PCB's
  - Intelligent LAN Access Module (ILAM)
  - Standard LAN Access Module (SLAM)
  - 1 Door Access Module
  - Integriti 8 Zone Expander
  - Integriti 2A & 3A Power Supply's
  - LAN Over Ethernet Device (CLOE)
  - LAN Isolator
  - Fibre Modem's
  - Fire Door Release Relay Card



The DIN rail clip pack Includes

- 2 x DIN Rail Clips
- 4 x M3x35mm Screws to suit T4000 & Inception Products
- 4 x M3 Self tapping screws to suit general PCB mounting



## Ordering Options

**999028**

Din Rail Clip Pack (2 Clips)